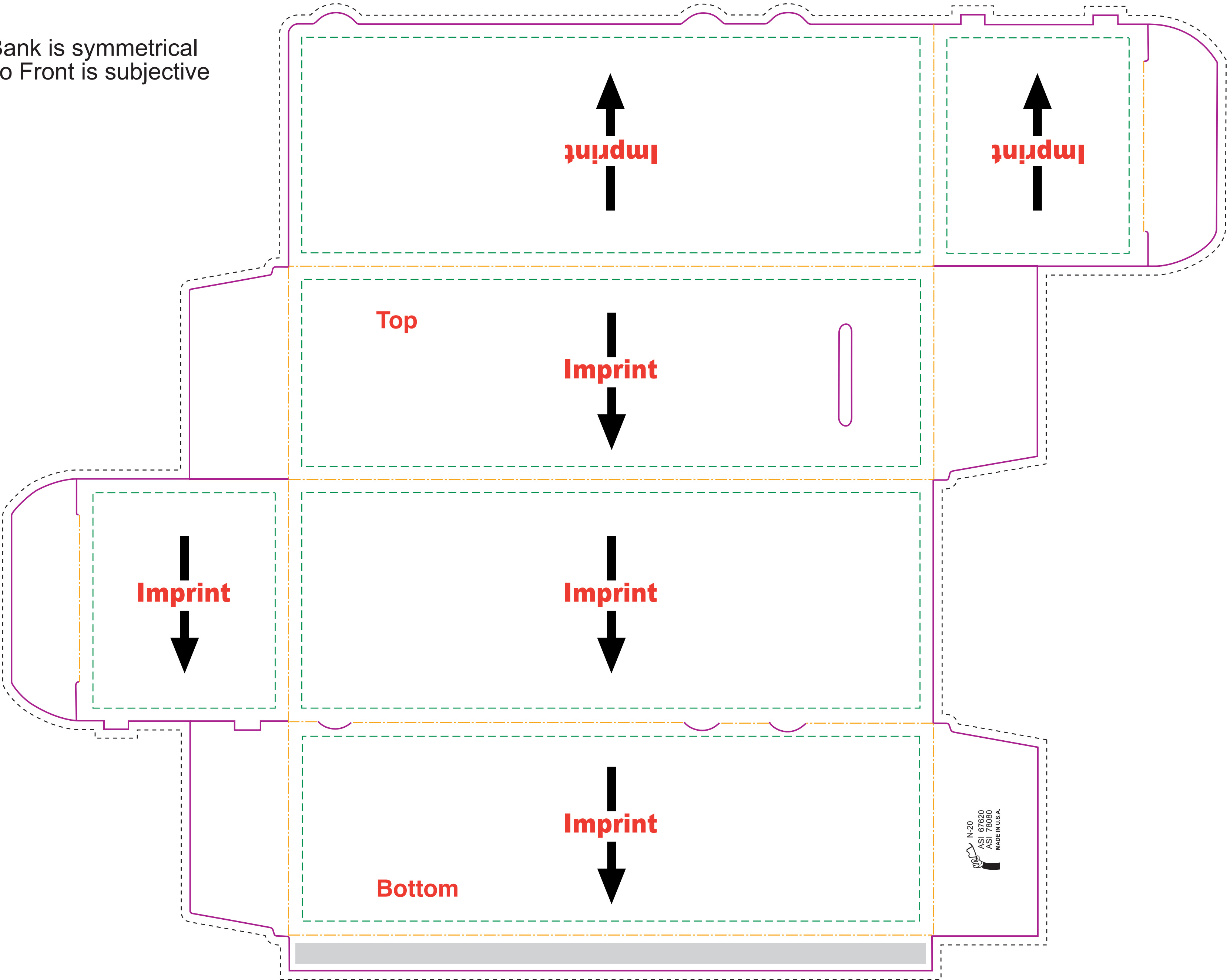


Actual size
Width: 17 in.
Height: 13.5 in.

**N20
Train Bank**

- **Bleed Line**
(1/8" offset from Die Line)
- **Die Line**
(represents actual cut product)
- - - - **Live Area**
(3/16" inset from Die Line)
- . - . **Fold**

Bank is symmetrical
so Front is subjective



Please keep all text and graphics inside the Live Area unless the graphic element is intended to bleed. Borders, if included, should bleed outward from the Live Area.
Please model spot colors using the Pantone solid coated Matching System
Please submit all Fonts and Links for output with your Final Composite.